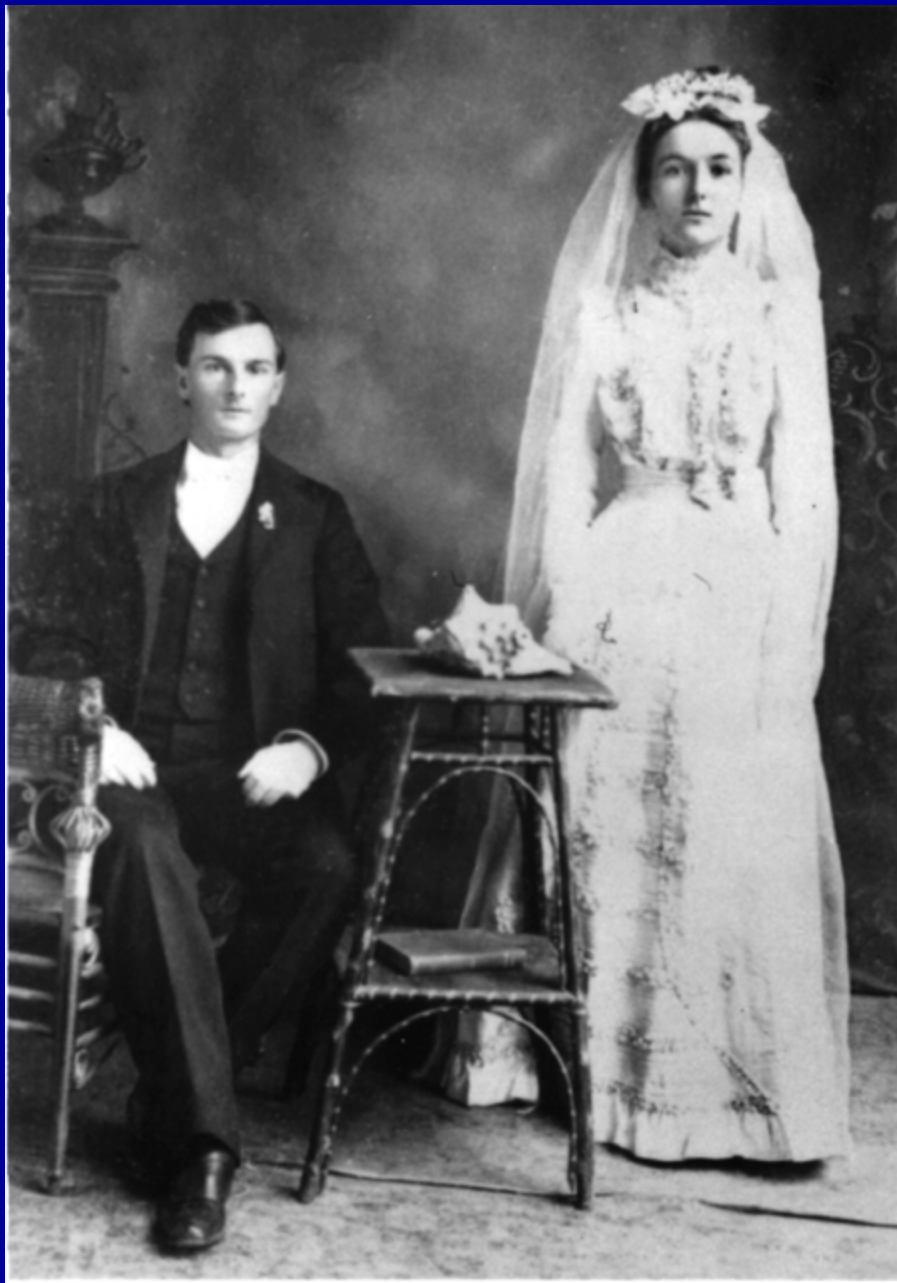
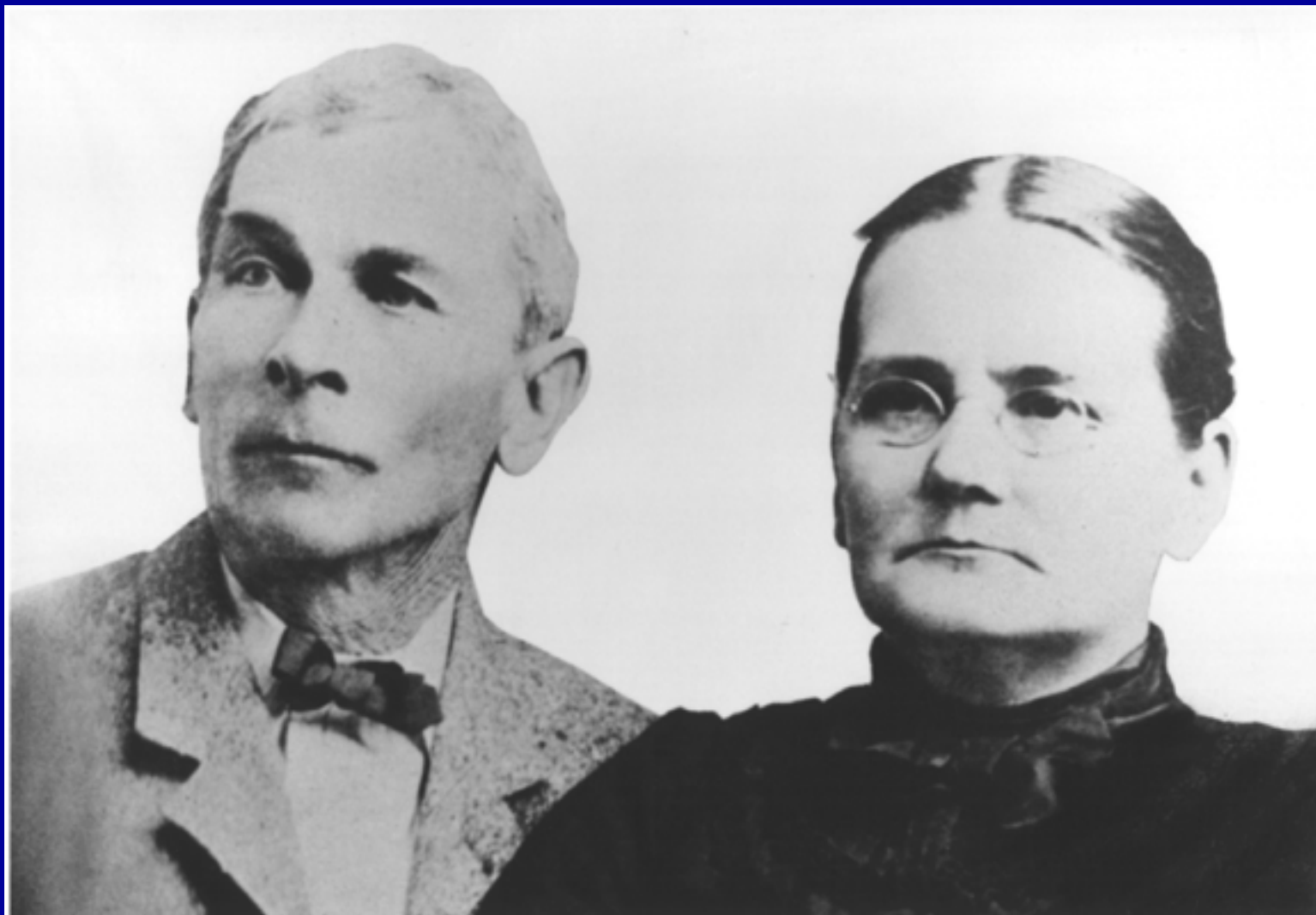


**The Frank and Mary Langford House
1890 - 2003**





**Benjamin Franklin Langford, Jr
and
Mary Emma Hay
Dec 6, 1899**



Isaac Berry and Elizabeth Jane Bird Langford



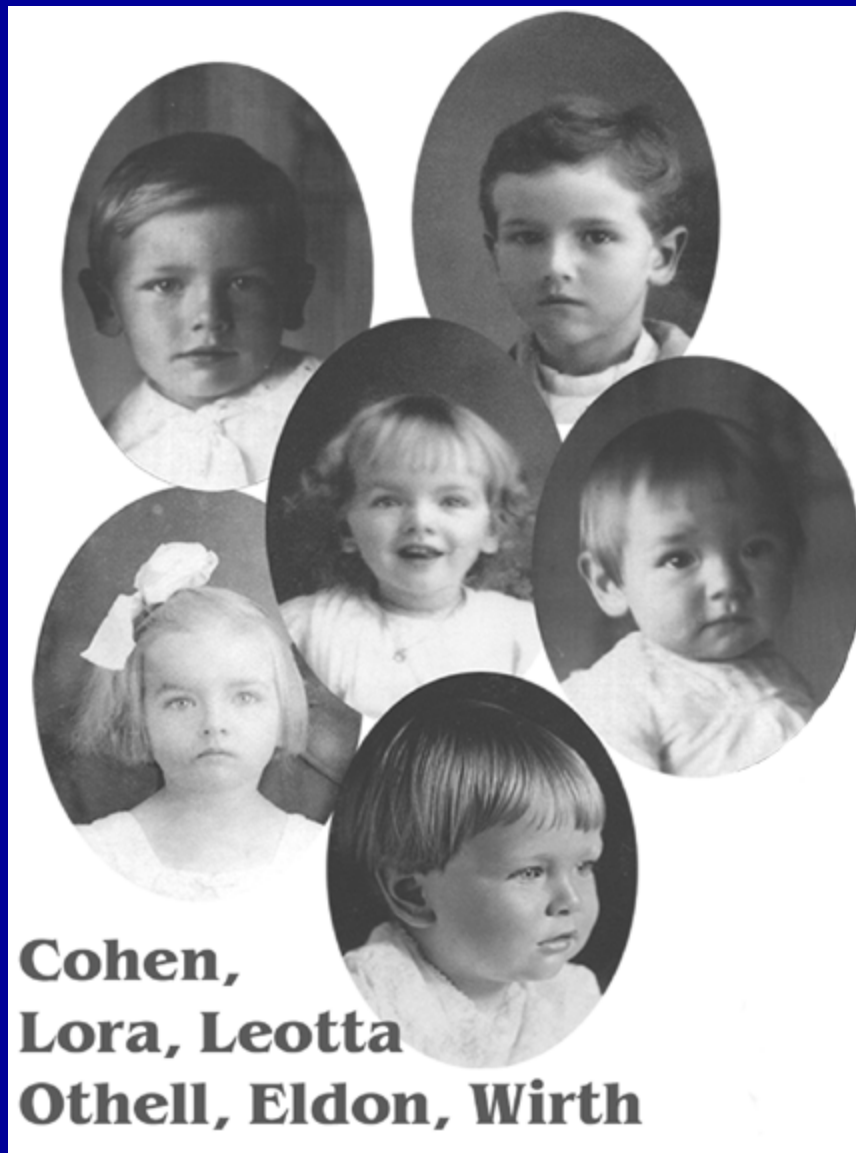
George and Virgine Minear Hay, 1899



Mary and Lora, 1907



Addition of the second floor, 1915



Mary, 1926



Cohen Hay



Othell, Joe Frank and Wirth



Eldon and Wirth



1929

Frank and Mary
Dec 6, 1949





July 19, 2003


























































BENJAMIN FRANKLIN A.
LANGFORD, JR.
BANDERA'S EARLY
LIMAN WYOMING
ARRIVED IN 1857
JENSEN - DARTON
SITE FROM
VIRGINIA
BANDERA
HILL
GO SAN
"ST. LANG
"EMMA - RA
HE HOUSE OVER
HE ONLY STORY
THIRD-STORY BLOCK
NARY WERE IN THE
DONATED LAND ACRES
NOR MONTICURE
LANGFORD WAGON, SO
REMAINDER OF BANDERAS
FOR THE STATE OF TEXAS



BENJAMIN FRANKLIN AND MARY RAY LANGFORD, JR. HOME

BANDERA'S EARLY SETTLERS INCLUDED LYMAN WRIGHT'S MORMON COLONY, WHICH ARRIVED IN 1854. THE 1890s JOHN AND IRVING DAVENPORT MILLER BOUGHT THIS SITE FROM COLONISTS GEORGE AND VIRGINIE MINNEAR HAY. GEORGE AND ELEANOR BANDERA, SETTLER ISAAC BERRY LANGFORD HELPED BUILD A HOME FOR THE MILLERS, WHO SOLD IT IN 1904 TO CHILDREN OF THE HAYS AND LANGFORDS. BENJAMIN FRANKLIN "FRANK" LANGFORD, JR. AND HIS WIFE, MARY EMMA RAY, THE COOPES, ADDED TO THE HOUSE OVER THE YEARS, CONVERTING THE ONE STORY, L-PLAN DESIGN INTO A TWO-STORY BLOCK STRUCTURE. FRANK AND MARY WERE ACTIVE IN THE COMMUNITY AND DONATED LAND ACROSS THE STREET FOR A MORMON CHURCH. THE LONGTIME LANGFORD FAMILY HOME SERVES AS A REMINDER OF BANDERA'S EARLY HISTORY.

© MARY EMMA RAY LANGFORD, JR. 2004





**BENJAMIN FRANKLIN AND MARY HAY
LANGFORD, JR. HOME**

BANDERA'S EARLY SETTLERS INCLUDED LYMAN WIGHT'S MORMON COLONY, WHICH ARRIVED IN 1854. IN 1890, JOHN AND JENNIE DAVENPORT MILLER BOUGHT THIS SITE FROM COLONISTS GEORGE AND VIRGINE MINEAR HAY. GEORGE AND EARLY BANDERA SETTLER ISAAC BERRY LANGFORD HELPED BUILD A HOME FOR THE MILLERS, WHO SOLD IT IN 1904 TO CHILDREN OF THE HAYS AND LANGFORDS: BENJAMIN FRANKLIN "FRANK" LANGFORD, JR., AND HIS BRIDE, MARY EMMA HAY. THE COUPLE ADDED TO THE HOUSE OVER THE YEARS, CONVERTING THE ONE-STORY, L-PLAN DESIGN INTO A TWO-STORY BLOCK STRUCTURE. FRANK AND MARY WERE ACTIVE IN THE COMMUNITY AND DONATED LAND ACROSS THE STREET FOR A MORMON CHURCH. THE LONGTIME LANGFORD FAMILY HOME SERVES AS A REMINDER OF BANDERA'S EARLY HISTORY.

RECORDED TEXAS HISTORIC LANDMARK - 2002